

**Town of STEADY BROOK**  
**Municipal Sustainable**  
**Development Plan 2010-2020**

**Future Land Use Map**

**LEGEND**

- Residential
- Commercial Tourism
- Commercial Highway
- Open Space Conservation
- Open Space Recreation
- Transportation
- Designated Floodway
- Residential - Floodway Fringe
- Open Space - Floodway Fringe
- Municipal Boundary

Dated at Steady Brook, Newfoundland and Labrador

This \_\_\_\_\_ day of \_\_\_\_\_, 2010

Donna Thistle, Mayor

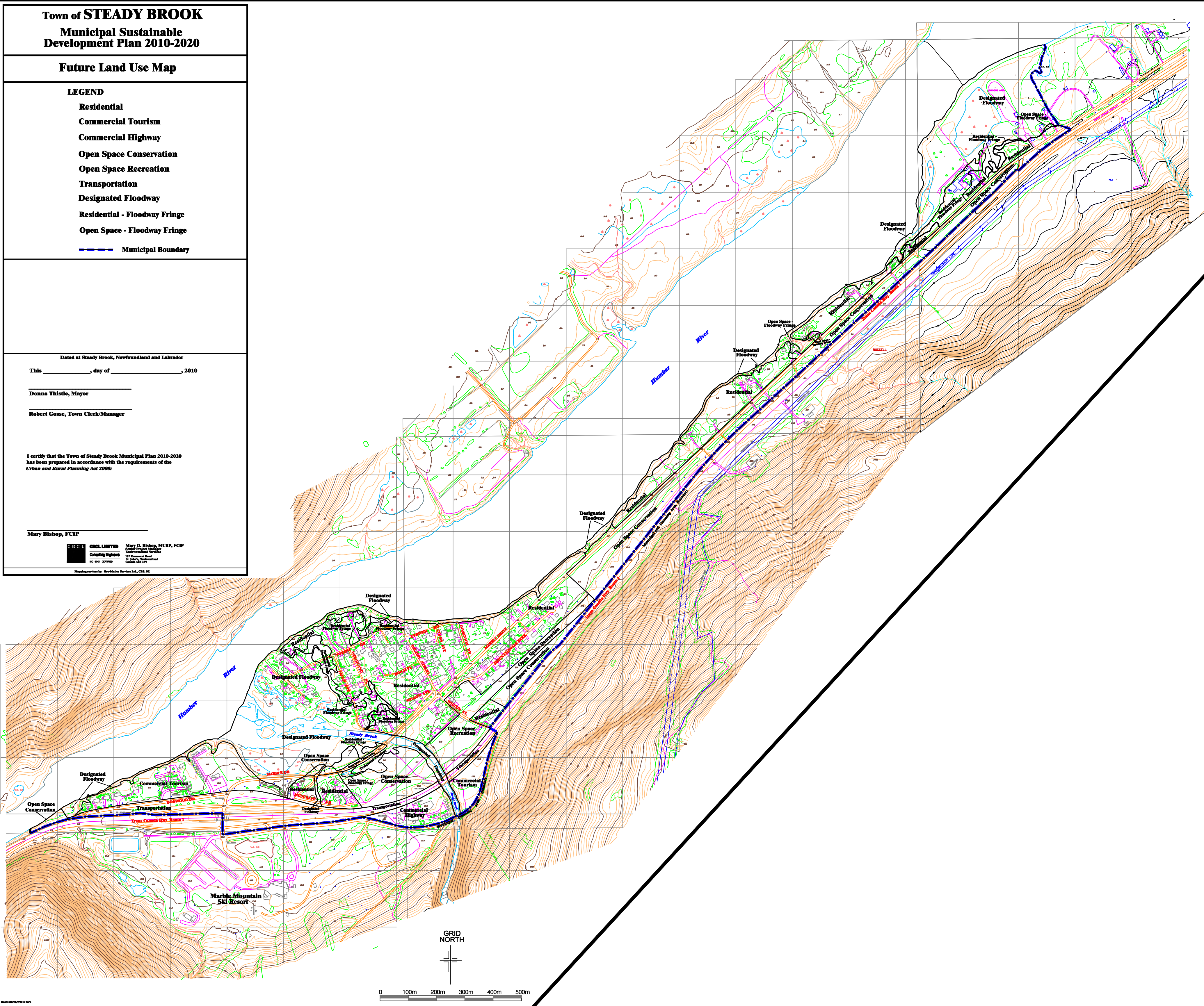
Robert Goss, Town Clerk/Manager

I certify that the Town of Steady Brook Municipal Plan 2010-2020  
has been prepared in accordance with the requirements of the  
Urban and Rural Planning Act 2006:

Mary Bishop, FCIP

**CS&L LIMITED** Mary D. Bishop, MURP, FCIP  
**Consulting Engineers**  
 100 Main Street  
 Steady Brook, NL A1A 1S1  
 No part of this document  
 may be reproduced  
 without written permission  
 of CS&L Limited

Mapping services by Geo-Matrix Services Ltd., CBS, NL



GRID  
 NORTH

0 100m 200m 300m 400m 500m