

# Town of STEADY BROOK

## Municipal Sustainable Development Plan 2010-2020


### Future Land Use Map

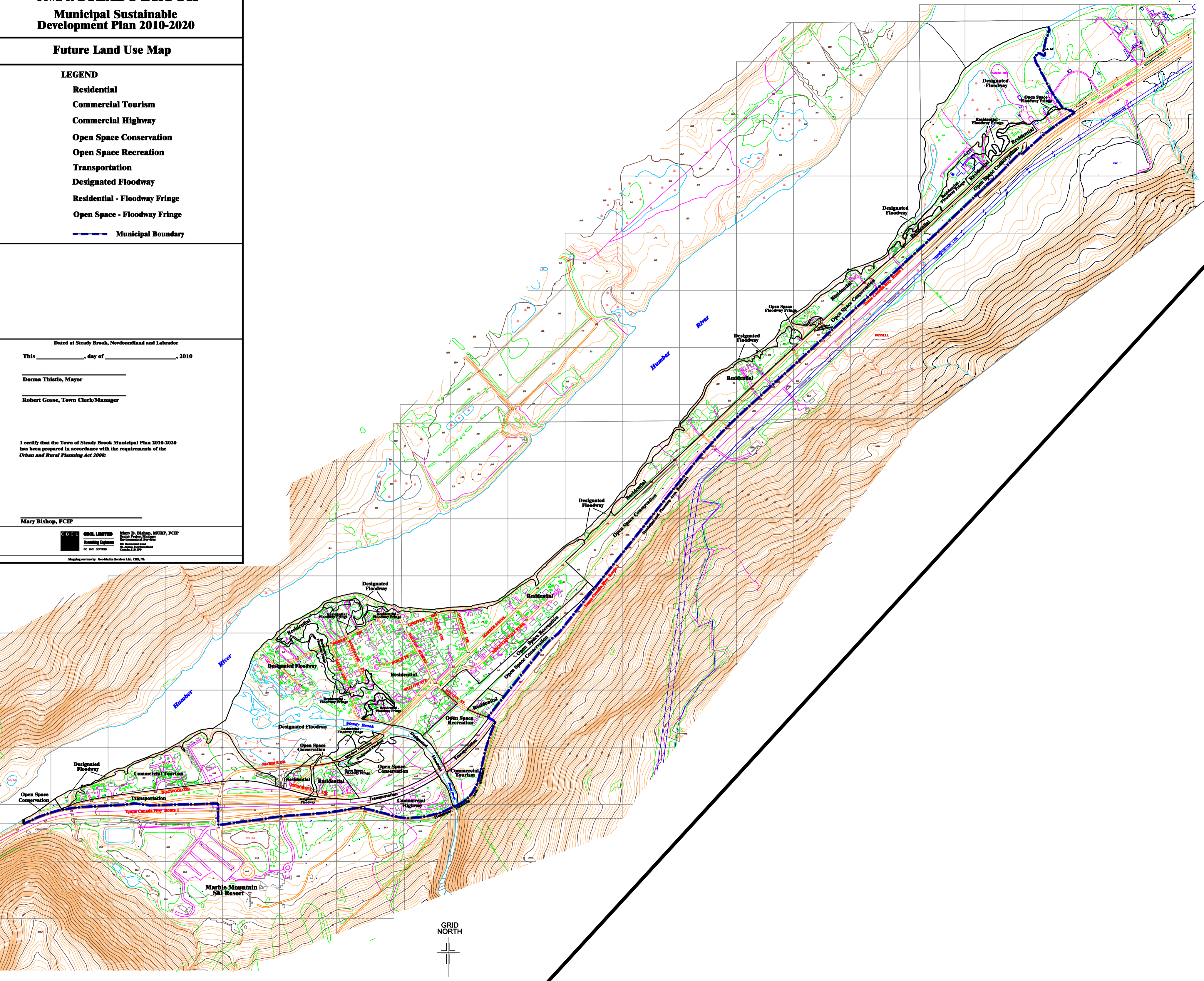
#### LEGEND

- Residential
- Commercial Tourism
- Commercial Highway
- Open Space Conservation
- Open Space Recreation
- Transportation
- Designated Floodway
- Residential - Floodway Fringe
- Open Space - Floodway Fringe
-  Municipal Boundary

Dated at Steady Brook, Newfoundland and Labrador  
This \_\_\_\_\_, day of \_\_\_\_\_, 2010  
Donna Thistle, Mayor  
Robert Gosse, Town Clerk/Manager

I certify that the Town of Steady Brook Municipal Plan 2010-2020 has been prepared in accordance with the requirements of the Urban and Rural Planning Act 2000:

Mary Bishop, FCIP  
 **C.O.C.E. LIMITED** Mary D. Bishop, MURP, FCIP  
Senior Project Manager  
Environmental Services  
117 Commercial Street  
St. John's, Newfoundland  
Canada A1B 3P9  
Mapping services by Geo-Maples Services Ltd., CBS, NS



GRID NORTH

